

## PLUG-IN CONNECTOR



in partnership with  
**G.matic**  
PNEUMATIC FITTINGS

**ALFAGOMMA**

## // PLUG-IN CONNECTOR

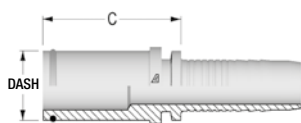
Plug-in Connector is the answer to reduced manifold surfaces and difficult assembly installations.

Quick, Easy and Safe, Plug-in Connector has been thoroughly tested for 1 Million cycles at 5000 PSI (350 bar).

Thanks to the compact integrated socket, there's no need of additional hydraulic components or adapters.

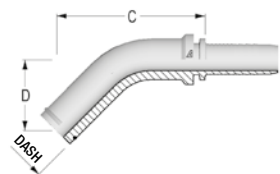
## // HOSE FITTINGS

### Straight



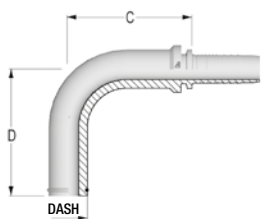
Part number	Hose ID inch	Hose ID mm	Dash	Plug-in DN Dash	C CUT-OFF mm
H1213Z10-040400	1/4	6,2	04	04	31,7
H1213Z10-060600	3/8	9,5	06	06	32,3
H1213Z10-080800	1/2	12,9	08	08	40,1
H1213Z10-121200	3/4	19	12	12	47,1

### 45° Elbow



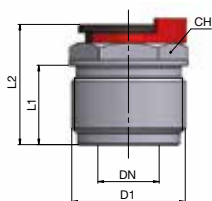
Part number	Hose ID inch	Hose ID mm	Dash	Plug-in DN Dash	D Drop mm	C CUT-OFF mm
H1213Z40-040400	1/4	6,2	04	04	24	47
H1213Z40-060600	3/8	9,5	06	06	28	55
H1213Z40-080800	1/2	12,9	08	08	32	62
H1213Z40-121200	3/4	19	12	12	44	83

### 90° Elbow



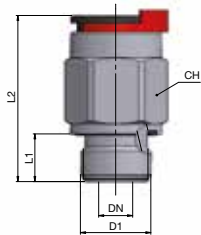
Part number	Hose ID inch	Hose ID mm	Dash	Plug-in DN Dash	D Drop mm	C CUT-OFF mm
H1213Z90-040400	1/4	6,2	04	04	41,5	28,2
H1213Z90-060600	3/8	9,5	06	06	49,5	44,9
H1213Z90-080800	1/2	12,9	08	08	58,0	47,7
H1213Z90-121200	3/4	19	12	12	72,5	59,8

## // PLUG-IN CARTRIDGE



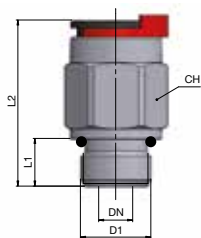
Part number	Plug-in DN Dash	D1 Thread	L1 mm	L2 mm	CH mm
R1A3ZC152M-0418	04	M20x1	19	26,5	20
R1A3ZC152M-0622	06	M23x1	19	27,5	23
R1A3ZC152M-0825	08	M30x1,25	25	34,5	30
R1A3ZC152M-1233	12	M38x1,5	28	40	38

## // PLUG-IN CONNECTOR



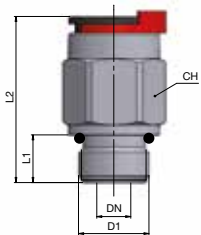
Part number	Plug-in DN Dash	D1 Thread in-TPI	D1 Thread Dash	L1 mm	L2 mm	CH mm
R1A3ZF106I-0404	04	1/4-18	04	12	38,5	19
R1A3ZF106I-0606	06	3/8-18	06	12	39	22
R1A3ZF106I-0808	08	1/2-14	08	14	49	27
R1A3ZF106I-1212	12	3/4-14	12	16	58	35

## SAE Oring Boss – UNF Stud (ISO 11926-3)

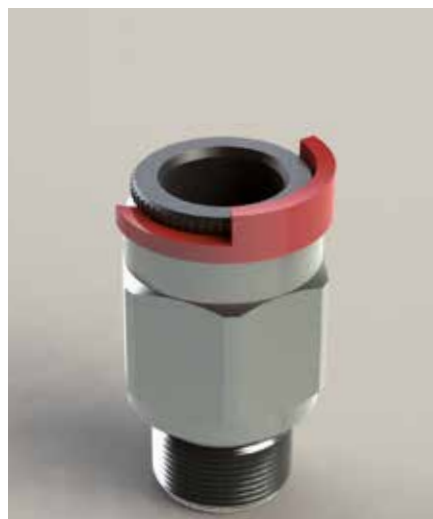


Part number	Plug-in DN Dash	D1 Thread in-TPI	D1 Thread Dash	L1 mm	L2 mm	CH mm
R1A3ZF1305-0404	04	7/16-20	04	11	37,5	19
R1A3ZF1305-0606	06	9/16-18	06	12	39	22
R1A3ZF1305-0808	08	3/4-16	08	14	49	27
R1A3ZF1305-1212	12	1 1/16-12	12	18,5	60,5	35

## Metric Stud (ISO 6149-3)



Part number	Plug-in DN Dash	D1 Thread	D1 Thread Dash	L1 mm	L2 mm	CH mm
R1A3ZF1525-0414	04	M14x1,5	14	9	35,5	19
R1A3ZF1525-0616	06	M16x1,5	16	11	38	22
R1A3ZF1525-0818	08	M18x1,5	18	12,5	47,5	27
R1A3ZF1525-1222	12	M22x1,5	22	15	57	35



## // PLUG-IN CONNECTOR

ALFAGOMMA, in order to improve customer's effectiveness in hydraulic assembly installations, with the valuable collaboration of CMatic, has engineered and produced an innovative hydraulic connector for quick and smart connections: no wrench, no tightening; only a safe and easy "click".

The operator does not even have to carry on-board hardware. Plug-in Connector reduces the exposure

to under pressure machinery's components while increasing safety and speeding up assembly procedures.

The Plug-in Connector is fully compatible with all hydraulic applications and represents an effective improvement of operations in connecting valves, filters, pumps, motors and other valuable components.

### PLUG-IN CONNECTOR

- ▲ TIME AND COST SAVING FOR ASSEMBLING AND INSTALLATION
- ▲ VERY COMPACT DESIGN, MINIMUM SPACE REQUIRED
- ▲ MAINTENANCE AND TESTING DOWN-TIME REDUCTION
- ▲ SAFETY STANDARDS AND RELIABILITY IMPROVEMENT

Plug-in Connector is the answer to reduced manifold surfaces and difficult assembly installations.

Quick, Easy and Safe, Plug-in Connector has been thoroughly tested for 1 Million cycles at 5000 PSI (350 bar).

Thanks to the compact integrated socket, there's no need of additional hydraulic components or adapters.



#### HEADQUARTER

Alfagomma SpA  
Via Torri Bianche 1  
20871 Vimercate (MB) Italy  
marketing@alfagomma.com  
www.alfagomma.com